

## Customer Bulletin

### WeatherTRAK Central Fall 2014 Release

CB\_110414

### WeatherTRAK Platform Release

11/4/14

HydroPoint, makers of WeatherTRAK, is proud to release WeatherTRAK Central Fall 2014 with a focus on helping property managers, water managers and site maintainers manage their site's assets, share important documents and notes, easily manage multiple controller configurations and manage larger sites with larger conventional and 2-wire controllers. In this release, HydroPoint expands **WeatherTRAK Site Asset Manager™** and introduces **WeatherTRAK Document Management and Notes™**, **WeatherTRAK Pro3 72 and 96 station** conventional controllers, and **WeatherTRAK Pro3 2-Wire 72 and 96 station** controllers.

#### [Asset Management](#)

Site Asset Manager

#### [Document Management and Notes](#)

Document Management

Notes

#### [Controller Management](#)

Saved Configurations

#### [96 Station WeatherTRAK Pro3 and Pro3 2-Wire Controllers](#)

#### [Additional WeatherTRAK.net Enhancements](#)

Station Grouping Upgrade

Schedule Reports available for all reports

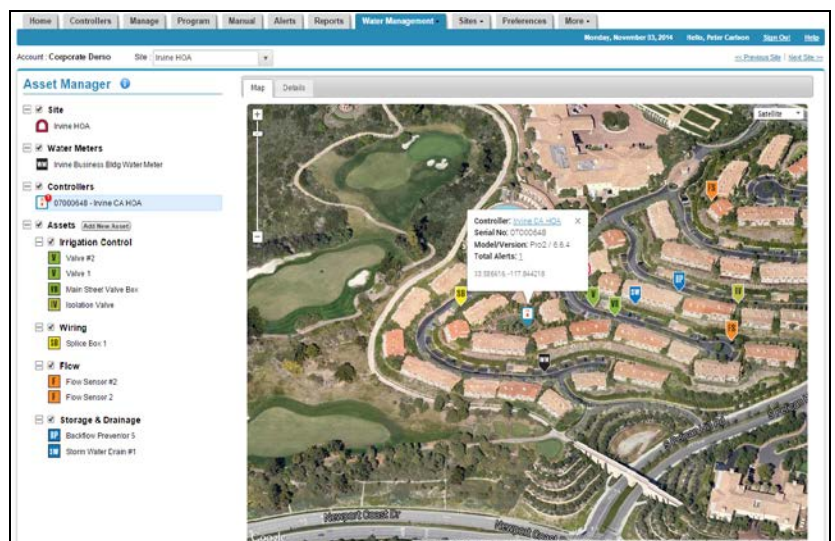
Multi-Controller Matrix Report

#### [Asset Management](#)

#### [Site Asset Manager](#)

##### Create a Living As-built for your Site's Assets

WeatherTRAK's updated Site Asset Manager helps site managers proactively manage their site's assets. This updated application allows users to track 6 asset type categories, 20 unique asset types and up to 24 different unique attributes per unique asset. The Site Asset Manager visually displays all assets on an interactive Google™ map. Asset Manager is available under the Water Management tab.



Features include:

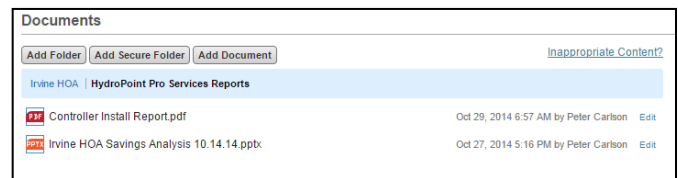
- **Site Specific Interactive Map**  
Using Google™’s satellite imagery, users can interactively view their site and its assets. User can simply select the desired asset on the map and select the link to view the details.
- **Track Site Assets**  
Users can track 20 unique asset types in 6 asset categories including Irrigation Control, Wiring, Flow, Storage & Drainage, Landscape and Other.
- **Track Asset Specific Details**  
Users can enter and track up to 24 unique attributes per asset giving them the ability to centrally store and manage important information. Attributes include asset type, a user defined name, company specific asset tag identifier, asset location, cost, installation date, size, dimension and many others.

## Document Management and Notes

### Document Management

#### Easily store and share documents and folders

Users can now easily add, download and share documents and folders. Documents or folders are associated with Sites, WeatherTRAK Controllers or any other Asset making them easy to find and context appropriate.



- **Centrally Store and Share Documents**  
Users can add documents including pictures, cad drawings, PDFs, Microsoft Word™ and Excel™ files. Documents are available to users with the appropriate site specific permissions.
- **Secure Folders for Secure Documents**  
Users with the Site Administrator role have the ability to create and access secure folders. Since only users with site administrator role have access, secure folders provide a location to store and share sensitive documents.
- **Permission Management**  
WeatherTRAK Document Management gives account administrators the ability to give users site specific permissions to documents and folders. WeatherTRAK Document Management supports the permission levels in the table below.

To change permission levels, please send an email to [support@hydropoint.com](mailto:support@hydropoint.com).

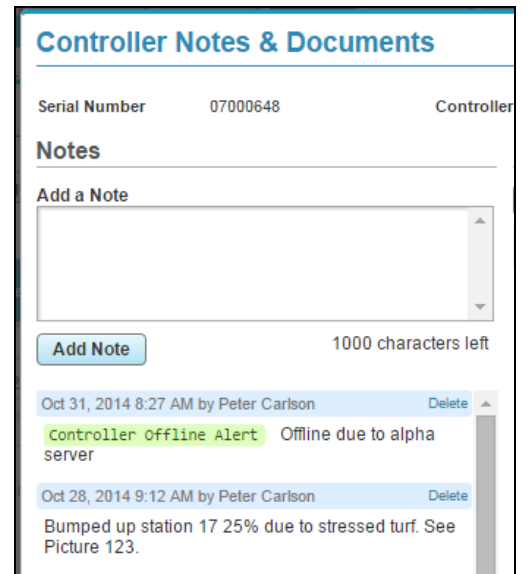
Permission Level	View Documents	Add Documents & Folders	Add & View Documents in Secure Folders
No Access (Default level)			
Read Only	X		
Read & Write	X	X	
Administrator	X	X	X

## Notes

### Easily add notes and keep an asset specific history

Users can easily keep track of important changes or events associated with Sites, WeatherTRAK Controllers or other Assets by adding notes. Notes can be up to 1000 characters each and there is no limit to the total number of notes allowed. Notes not only include text, but also track who wrote it and when it was created. Notes can only be deleted by the author or a Site administrator.

User can quickly add notes on most screens in WeatherTRAK.net including the Alerts screen. A notes link is now accessible next to each Alert. When adding notes from the Alerts screen, the note will be associated with a Controller to ensure easy access to the information once the alert has been cleared.



## Controller Management

### Saved Configurations

#### Save time and controller settings knowledge through WeatherTRAK Saved Configurations™

WeatherTRAK.net now provides users the ability to save and name complete WeatherTRAK Controller configurations. Saved Configurations reduces the time to reconfigure a controller's settings making it easier to manage events such as over-seeding and fertilization.

Features include:

- **Name and Save Complete Controller Configurations**

From the WeatherTRAK.net Program screen, users can save complete controller configurations including all Setup, Flow, Program, and Station settings. Note, the latest learned flow settings will always be used.

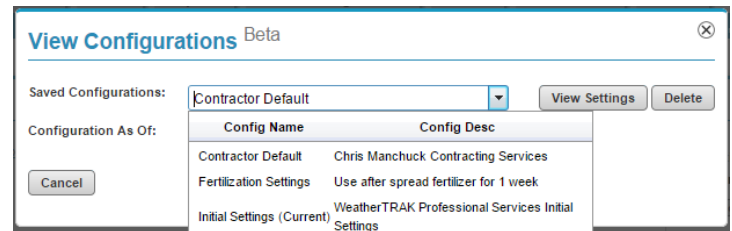
- **View a Saved Configuration or a Configuration at a Specific Date**

Users can simply view a named or time specific configuration without sending it to the controller.

- **Create a Settings Difference Report**

Show the difference between up to four different saved configurations or configurations at a specific date and time, making it simple to see the difference between multiple configurations.

Only WeatherTRAK Controller with version 6.6 or 7.2 or above can utilize this feature. To update your controller at no charge, please contact customer support at [support@hydropoint.com](mailto:support@hydropoint.com).



## 96 Station WeatherTRAK Pro3 and Pro3 2-Wire Controllers

HydroPoint is proud to announce four new WeatherTRAK controller models to help customers meet their site's irrigation and flow management requirements. The **WeatherTRAK Pro3** is now available in 72 and 96 station models. These new models enable users to combine multiple conventionally wired controllers into one making it easier for maintainers to manage a site's requirements especially when the site has tight water windows.

The **WeatherTRAK Pro3 2-Wire** is also available in 72 and 96 station configurations. These controllers give users greater options to manage larger sites as well as the ability to get the benefits of WeatherTRAK Central on existing sites with other higher station count two wire systems.

All the new controller models support up to two flow sensors and master valves making it easier to manage sites with a single point of connection or multiple points of connection in a looped mainline configuration. Managing all the stations with a single controller provides greater ease of use and easier flow management for larger sites.

## **Additional WeatherTRAK.net Enhancements**

### **Schedule automated delivery of Subscribed Reports for all report types**

#### **Schedule any report to automatically be generated and delivered when you want it**

WeatherTRAK.net has expanded its ability to create scheduled reports. Now every report within WeatherTRAK.net can be scheduled and sent to one or more email addresses automatically. Simply select the Subscribe button on the report you want scheduled and configure when and the output format. Reports can be generated and sent in either PDF or Excel™ format.

### **Relative % Adjust Added to Station Grouping**

#### **Quickly respond to changing compliance and drought requirements**

Responding to compliance changes is an important part of water management. Using WeatherTRAK's Station Grouping features, users can quickly change multiple stations across multiple controllers and multiple sites with just a few clicks. In the WeatherTRAK Fall 2014 release, users can now change % Adjust setting relative to the station's existing setting. For example, if station 1 is set to +5% and station 2 is set to -10%, the new relative % Adjust option can change both stations by -20%. This would change station 1 to -15% and station 2 to -30%. This type of relative change allows users to quickly respond to compliance requirements driven by drought or other agency requirements.

### **Copy and Paste Station Settings**

#### **Save time by copying existing station settings to similar stations**

Users can now copy existing stations settings on the Program screen and paste those settings to one or more other stations which have similar settings. This reduces the time it takes to program a controller, and especially useful when programming large station count controllers.

### **Multi-Controller Matrix Report**

#### **View multiple controller settings in one report**

Users can now review and export multiple controllers settings with the Multi-Controller Matrix Report. This report saves users time by providing multiple single controller settings reports in a single report. Users can then review the settings and ensure they are programmed appropriately.

If you have questions please contact us [support@hydropoint.com](mailto:support@hydropoint.com) or call toll-free (800) 362-8774 during business hours.