

Customer Bulletin

WeatherTRAK Central RELEASE

CB_04093

WeatherTRAK.net 7.7 and WeatherTRAK Budget Manager

04/09/13

Introducing WeatherTRAK Budget Manager, WeatherTRAK Site Asset Manager, Multi-Controller Station Group Management and User Interface Enhancements

Products: WeatherTRAK Central's WeatherTRAK.net

Summary

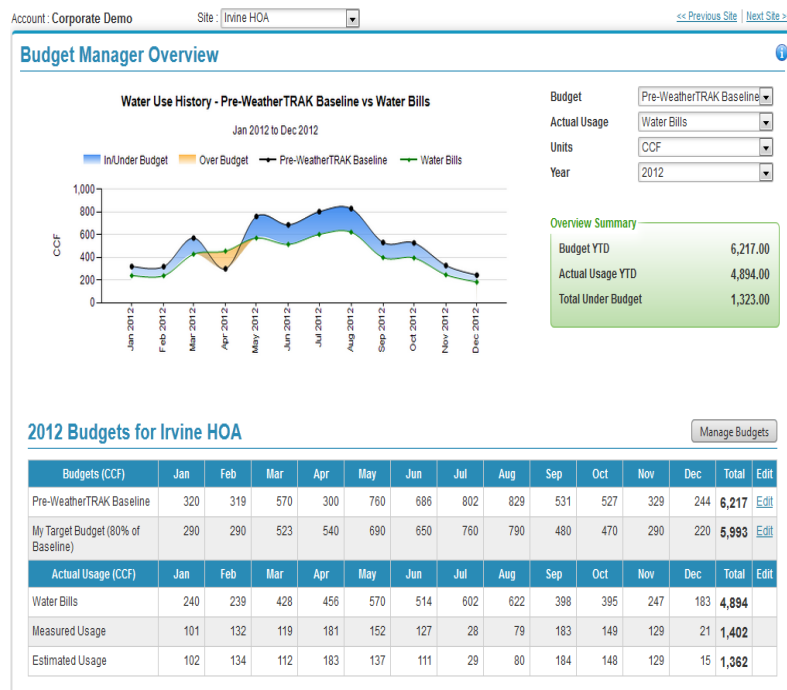
HydroPoint Data Systems, Inc., makers of WeatherTRAK smart irrigation control products, is pleased to announce the formal release of WeatherTRAK.net 7.7 including WeatherTRAK Budget Manager.

The enhancements to WeatherTRAK Central service include new water management functionality, time-saving remote budget and asset tracking features, security enhancements and user interface upgrades.

WeatherTRAK Budget Manager

WeatherTRAK's Budget Manager delivers simple real-time visibility into a site's water consumption, comparing up to three different user-defined budgets.

Budget Manager Dashboard – Provides a graphical view of water consumption or fiscal dollars compared with user-defined budgets. When integrated with WeatherTRAK's flow-enabled central controllers, Budget Manager also provides daily measured and estimated usage consumption information to easily see the site's current budget status.



Budget Monitor – Users can check the status of a monthly or annual budget at a glance. This interface allows a user to review information by Account, Budget Type, and Actual consumption data sources including Unit, Month or Year.

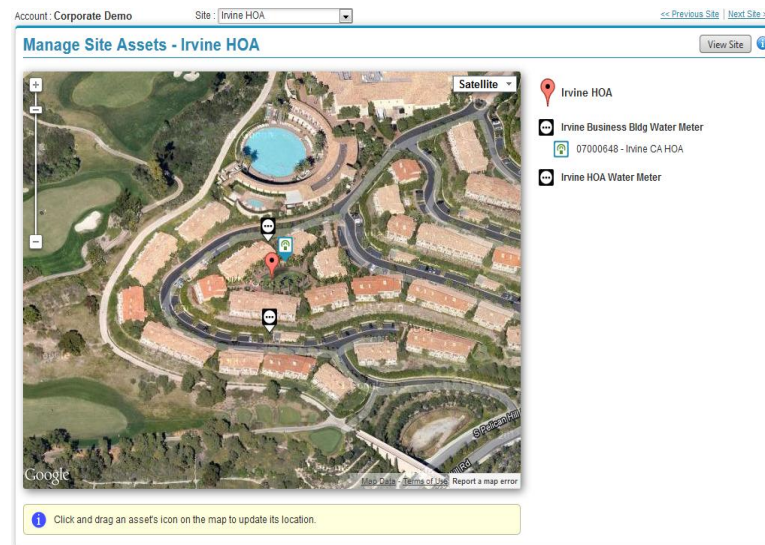
Water Budget Account Report and Water Budget Site Reports – The Water Budget Account Report provides a graphical budget status summary for all sites in an account as well as individual site status. This report provides a high level, easy to understand executive summary. The Water Budget Site Report graphically summarizes a site's total usage across each water meter and controller to deliver individual site level details to the user and operations teams.

Budget Manager Water Bill Tracking – Optionally enter water meters and water bill data either through a single water bill entry screen or a batch water bill entry screen to capture multiple water bills.

Controller Estimated Usage – Tracks a controller’s usage by multiplying a station’s runtime times the station’s flow rate. The station flow rate can either be learned from a controller with an attached flow sensor or manually entered in WeatherTRAK.net on the Program page even if the controller does not have a flow sensor. This theoretical usage enables station-specific usage reporting and can help users estimate the conservation opportunity of specific landscape changes such as high efficiency spray nozzle retrofits.

WeatherTRAK’s Budget Manager is included as part of the WeatherTRAK Central service.

WeatherTRAK Site Asset Manager

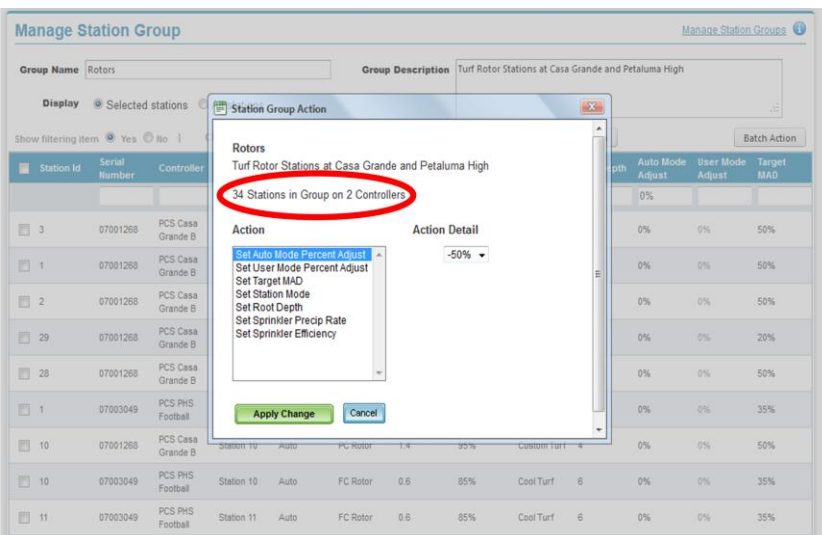


Centralized Site Information – Create a central repository on WeatherTRAK.net to track site specific information that can be shared across multiple users. Information includes site address, landscape maintainer and location. Site Asset Manager also allows users to import a site image that will be used in site-specific reports for visual reference.

Irrigation Asset GIS Tracking – Integrated, interactive Google Maps enable users to track important assets and landscape data for individual sites including WeatherTRAK Controllers and water agency Water Meters. The WeatherTRAK.net Site Asset Manager enables users to track an asset’s GIS (Geographic Information System) location, update asset status, and visualize all of a site’s inventoried assets.

Multi-Controller Station Group Management

Multi-Controller Station Group Management – Helps reduce time and hassle when station-specific changes need to be made across many controllers. Users can quickly change station settings across multiple controllers with a single click even if the controllers are at different sites.



Temporary station changes, such as changing the station mode for turf stations during over-seeding periods, can now be easily accomplished.

Users can filter the list of stations by up to 12 different fields and configure 7 different station settings values.

Once a set of stations has been filtered and selected, those stations can be saved into a Station Group and future changes can be easily applied to that same group of stations.

User Interface Enhancements

Additional setting changes – WeatherTRAK.net has expanded remote change settings including Station High Flow Offset, and extended leak delay time / support for High Desert Scheduling (*requires Controller release 6.4 or greater*).

Interactive Home Page Drill Downs –Select either the Controller Status or Alert Categories Summary charts on the Home page to automatically drill down into the selected category.

Support

These upgrades and features are now available to all users with access to WeatherTRAK.net, an active WeatherTRAK Central subscription and an active two-way WeatherTRAK ET Pro or LC Controller.

If you experience a WeatherTRAK.net web page that has incorrect formatting, ***please hit the F5 key***. This will typically resolve any issues without needing to contact Customer Service.

For additional help, please contact HydroPoint Data Systems Customer Support at support@hydropoint.com or visit our [WeatherTRAK Central Support page](#) online for details.