

# WeatherTRAK Pro3 Dual Chassis (72 and 96 Stations) Installation Instructions

---

## General Description

WeatherTRAK's conventionally wired 72 and 96 station dual chassis controller enables management of up to 96 stations and 4 flow sensors and master valves from a single controller interface.

The dual chassis controller consists of two back panels designed to be installed in appropriate pedestal type enclosures (for details please check the product catalog). The two chassis are identified as Primary and Extension. The Primary chassis is equipped with the power transformer and the Command Module. The Extension chassis is a unit providing additional termination for stations number 49 and up. The Extension chassis is available in two options. First provide extension up to 72 stations where the second one will extend the station count up to 96.

## Application

Dual Chassis Controllers are available in the following configurations:

Chassis Model #	Application
WTPRO3-C-XX-CH1	Wall mount enclosure. Max distance from left to left edge 25"
WTPRO3-C-XX-CH2	Designed for side by side and back to back enclosures.
WTPRO3-C-XX-CH4	Pedestal type enclosure. Max distance from left to left edge 25"
WTPRO3-C-XX-CH5	Pedestal type enclosure. Max distance from left to left edge 25"
WTPRO3-C-XX-CH7	Pedestal type enclosure. Max distance from left to left edge 25"

## Additional Equipment Needed

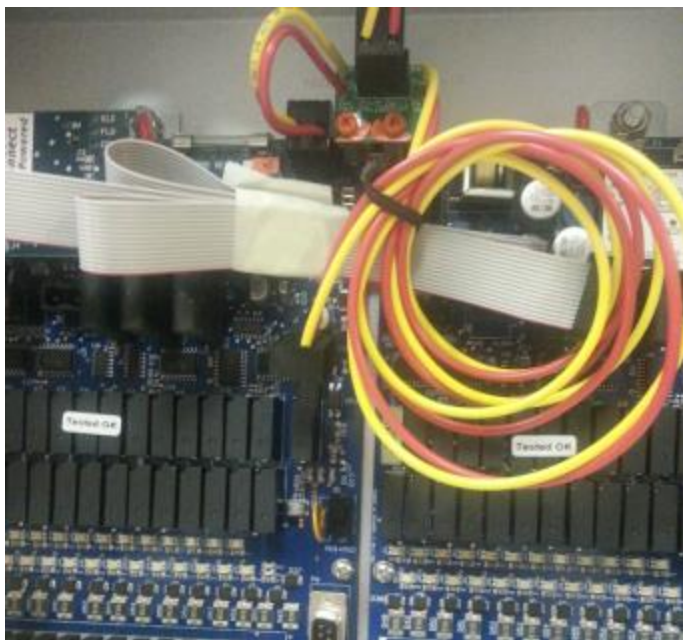
To install the WeatherTRAK 72 or 96 stations in two independent enclosures you will need to install a **liquid tight conduit (1" minimum diameter)** to provide connection path between the two enclosures. All electrical cables required to interconnect both units are provided as part of the kit.

## Controller Overview

Primary Chassis and Extension Chassis Assemblies as shipped. Please notice power connection on the Primary Chassis only.



**Figure 1. Chassis, Primary on the Left Extension on the Right**



**Figure 2. Power Splitter Connection at Primary Chassis**

## Installation

### Side by Side and Back to Back Enclosures

If the controller is installed in a Side by Side enclosure:

1. Install the Primary chassis on the Left side of the enclosure.
2. Install the Extension chassis on the Right side of the enclosure.
3. After mechanical installation is completed plug in the interconnect cables to the Extension unit.
4. Plug in the ribbon cable to the Command Module and Power up the Controller.

If there are installed in Back to Back enclosure:

1. Install the Primary chassis on one side of the enclosure.
2. Install the Extension chassis on the other side of the enclosure.
3. After mechanical installation is completed plug in the interconnect cables to the Extension unit.
4. Plug in the ribbon cable to the Command Module and Power up the Controller.

To reference connectors locations see Figure 3.



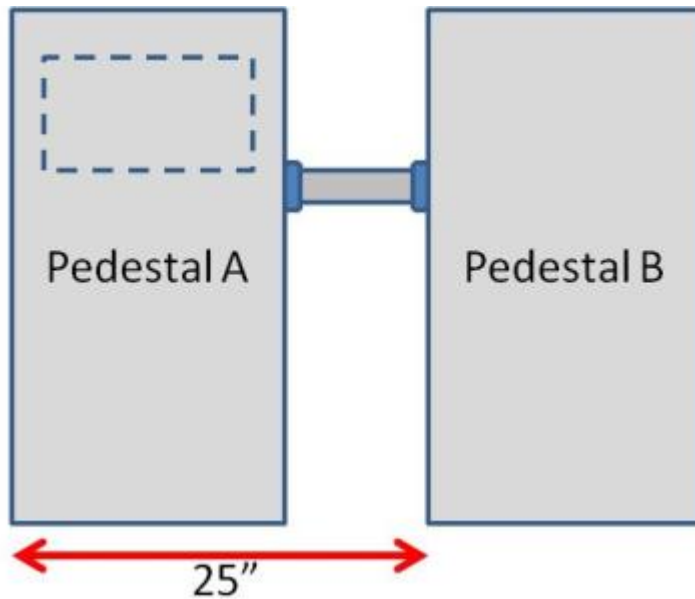
**Figure 3. Power and Ribbon Cables Connection at Extension Chassis**



**Figure 4. Command Module Ribbon Cable Connection**

## Two Pedestal Enclosures Configuration

Installing the 72 and 96 station controller in two enclosures requires that both enclosures are positioned next to each other and at the same level. The maximum distance between Left Side Edges of both enclosures cannot exceed 25" inches. See Figure 5. To interconnect both pedestal enclosures a **liquid tight conduit 1" minimum diameter must be installed** to provide connection path between the two enclosures.



**Figure 5. Dual Pedestal Configuration**

Dual Pedestal configuration requires that the Primary chassis must be installed in the Left side enclosure and the Extension in the Right side to make the interconnect cables work correctly.

1. Modify both enclosures to install conduit between them.
2. **Position the conduit at the height matching position of the lower edge of the Command Module.**
3. Install the Primary chassis in the enclosure positioned on the Left side.
4. Install the Extension chassis in the enclosure positioned on the Right side.

## Interconnect Cables Installation

- 1) Install the **1" liquid tight conduit** between the Primary and Extension enclosures.
- 2) Check that the O-ring is installed on the outside of the enclosure



**Figure 6. Gasket and Conduit installation**

- 3) Insert the yellow and red wires through the conduit connection.
- 4) Form and insert the ribbon cable through the conduit connection.



**Figure 7. Interconnect Cables Installation**

- 5) After mechanical installation is completed plug in the interconnect cables to the Extension unit. To reference connectors locations see Figure 3.
- 6) Plug in the ribbon cable to the Command Module and Power up the Controller.